

Bromley & Cotica's
Journey on the
AMAZON

 **Playzle**™ BUILD THE PUZZLE, PLAY THE GAME!



games with an aptitude®



www.tallicor.com

Ages: 4 plus • Players: 2-6

How wonderful it will be to take a journey down the Amazon with your friends Bromley (parrot fish) and Cotica (parrot). You will learn about the actual animals that live in the Amazon. Along the way, see special places such as Bromley's Flower Garden, the Spectacled Caiman Lodge, Pygmy Owl Singing Classes and the Kapok Hop Dance Camp.

Objective:

Be the first player to move your game piece on the path through the Amazon to the coast.

Contents:

12 Playzzle™ Puzzle Pieces

Playing cards: 76 Cards

1 each – Spectacled Caiman Lodge, Bromley's Flower Garden, Pygmy Owl Singing Classes, Kapok Hop Dance Camp

6 Anacondas

6 Rain Clouds

6 Tapirs

6 Spider Monkeys

6 River Otters

6 Anteaters

6 Jaguars

6 Toucans

6 Cotica the Parrot

3 Tarantulas

3 Piranhas

3 Butterflies

3 Turtles

3 Bats

3 Pink River

Dolphins



How to set up the game:

1. First assemble the Playzzle™ puzzle on a flat surface to set up the game board.
2. Shuffle the cards face down in the box top or you may place them in a pile off of the Playzzle™ within reach of all players.

3. Each player chooses a playing piece to move through the Amazon and places it at the Start Hut on the Playzzle™ (bottom left hand corner).

How to play the game:

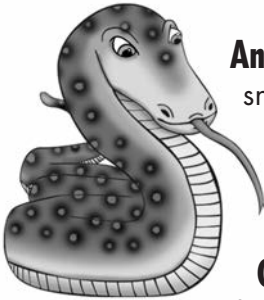
1. Start with the youngest player and proceed clock-wise.
2. On each turn draw one card from the pile and move your game piece to the first matching space on the path that your card directs you to. When your turn has been completed discard the playing card into a discard pile.
3. Always move your game piece forward on the path unless you are directed to move backward, or to a Special Space. Two or more players may be on the same space at the same time.
4. Special Space Cards: If you pick a special place card, move directly to that space on the path. Special space cards are Pygmy Owl Singing Classes, Spectacled Caiman Lodge, Bromley's Flower Garden, and Kapok Hop Dance Camp. For example, if you draw the Spectacled Caiman Lodge card move your game piece to that spot on the game path.
5. Animal Action Cards: If you pick an action card move your game piece in the direction of the action.
Tarantula – go back 5, Bat – go back 3,
Butterfly – go ahead 5, Pink River Dolphin – go ahead 3,
Turtle – go ahead 1
6. Amazon shortcuts: There are three short cuts, Otter Way, Spider Monkey Bridge and Anaconda Way. You must pick the correct animal card. Giant River Otter, Spider Monkey or Anaconda and/or land on the exact space to immediately take the shortcut. The shortcuts only move a game piece forward, you can not go backwards.
7. Quicksand – lose a turn spaces: There are 3 quicksand lose a turn spaces on the Amazon trail. If you pick the rain cloud card and are directed to the quicksand space you lose your next turn.
8. The Great Equalizer Card: There are 3 Piranha cards that allow a player to switch places with any player on the Playzzle™.

How to Win the Game:

If you're the first player to reach the last parrot space or move beyond the last space you have won the game.

Animals in the Amazon

Amazon - The Amazon river basin is over 4,000 miles long (6437km) and is the second largest river in the world traveling through the countries of Peru, Bolivia, Ecuador, Colombia, Venezuela and Brazil. The tropical climate is tempered by the heavy rainfall and is a well known water source for the largest rainforest in the world. The Amazon River carries more freshwater to the ocean than any other river in the world. The Amazon Rainforest has tall trees, a warm climate, and a layer of branches and leaves called a canopy. To be classified as a rainforest it must rain at least 80 inches per year.

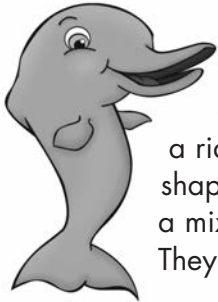


Anaconda is a large, non-poisonous snake that lives in the Amazon. The Green Anaconda is one of the largest snakes in the world.

Giant Anteater lives in the grassland. They have an incredible sense of smell and hearing, spending all day searching for food. Their diet consists primarily of ants and termites, which they catch with a long sticky tongue. Their tail is almost as long as their body and they use it to keep warm at night.

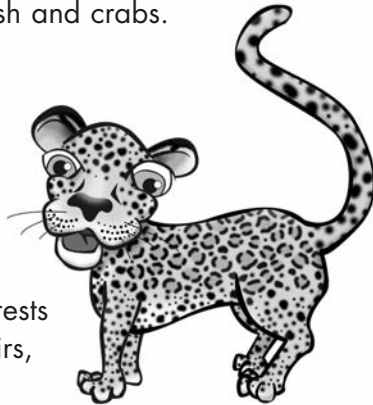


Butterflies are the second largest group of pollinators after bees. Butterflies taste with their feet and smell with their antennae. They are cold blooded and to warm up their muscles to fly they open their wings and absorb the heat from the sun. They are known for having a four stage life cycle: egg, larva (caterpillar), pupa (chrysalis) and adult butterfly.



Pink River Dolphin has a long beak, plump cheeks, small eyes and a thick body. They also have a ridge along the back and paddle shaped fins. They are able to live in a mix of fresh and salt water. They feed on fish and crabs.

Jaguar is the largest species of the cat family found in the Americas. They are excellent swimmers and have great climbing ability. They prefer to live by rivers, and in dense forests where they can hunt deer, tapirs, frogs, mice, birds and fish.

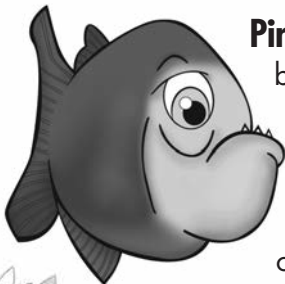


Giant Leaf Frog is nocturnal and lays eggs in a leaf-nest above the forest floor. When they hatch, the tadpoles fall into the water where they continue to develop into adult frogs.

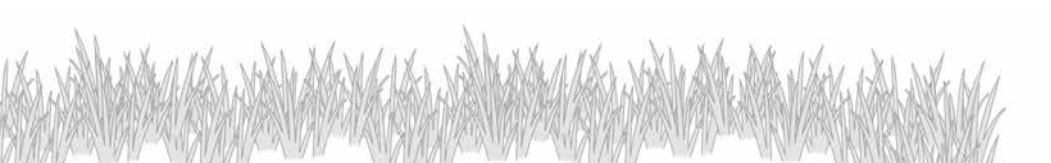


Giant River Otter is the world's largest otter, and can grow to 6 feet (1.8 meters) long. It is a member of the weasel family and lives in the rivers and creeks of the Amazon. Otters swim strongly through the water by using their webbed feet and powerful tails. The Giant River Otter's diet is primarily fish.

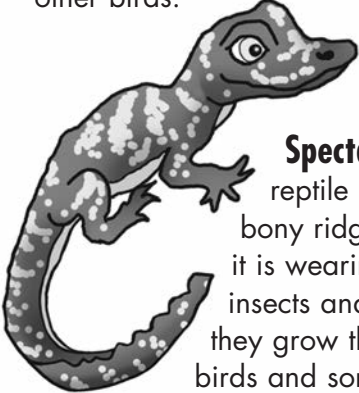
Parrots are birds with a curved bill and strong-clawed feet. Their diet consists of nuts, seeds, fruit and other plant material. Parrots are intelligent birds and are able to imitate sounds.



Piranha is an omnivorous (eats both plants & animals) freshwater fish. They have an aggressive temperament and very sharp teeth. They are often seen swimming in large schools called shoals. They spend most of the day hunting for food.



Pygmy Owl is a bird of prey. They like to be alone and come out at night (nocturnal) to hunt for food. They hunt and eat small mammals, insects and other birds.



Spectacled Caiman is a crocodylian reptile that got its name because of the bony ridge above its eyes that looks like it is wearing spectacles (glasses). They eat insects and crustaceans when young. As they grow they feed on fish, reptiles, water birds and sometimes larger mammals.

Spider Monkeys have a long tail and long limbs that assist them in moving swiftly amongst the trees. They find food in the treetops where they live eating fruits, nuts, bird eggs, leaves, and spiders. They communicate with many different sounds including barks, screeches and calls.



Turtles are reptiles whose bodies are protected by an upper and lower shell. Turtles use their jaws to cut and chew their food.

Tarantulas are the biggest of spiders. They have eight hairy legs, and two big fangs. They eat insects, small rodents and small birds by jumping on them and biting them with their fangs. They have small claws that help them climb.



Tapirs are large mammals and shaped like a pig. All Tapirs have white-tipped ears, stubby tails and hooved toes that help them walk on soft or muddy ground. They enjoy eating berries, fruits and leaves.

Toucans are brightly marked birds with large colorful beaks that can reach lengths of 7.5 inches (19 cm). They primarily eat fruit but may also eat insects and small lizards. They make their nests in natural cavities and in tree holes.



Bats are the only mammals that are capable of sustained flight. Bats make high-pitched sounds and listen to its echo to help them navigate objects and food. Bats eat insects, mosquitoes, small animals and fish.

Resources: BBC, Britannica, Encarta, National Geographic, San Diego Zoo, Wikipedia, Wilderness Classroom, Wise Geek, World Wildlife



Aristoplay, Ltd. • A Division of Talicor, Inc.
901 Lincoln Parkway • Plainwell, Michigan 49080
Made in USA • Item No. 370



©2009, 2011 Barking Penguins, LLC in conjunction with Fun With Languages®.
Game designed by Barking Penguins™ for Fun With Languages© all rights reserved.
Playzzle™ is a registered trademark of Barking Penguins™ all rights reserved.